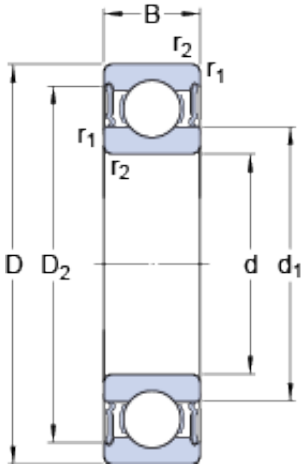




# BEARING INDUSTRIA CUSCINETTI S.P.A.



40 mm x 80 mm x 18 mm skf 6208-2RS1 Deep groove ball bearings

Bearing No. 6208-2RS1

6208-2RS1 Bearing 2D drawings and 3D CAD models

Size	80x40x18 mm
Bore Diameter	80 mm
Outer Diameter	40 mm
Width	18 mm
d	40 mm
D	80 mm
B	18 mm
d <sub>1</sub>	52.6 mm
D <sub>2</sub>	69.8 mm
r <sub>1,2</sub> - min.	1.1 mm
d <sub>a</sub> - min.	47 mm
d <sub>a</sub> - max.	52.5 mm
D <sub>a</sub> - max.	73 mm
r <sub>a</sub> - max.	1 mm
Basic dynamic load rating - C	32.5 kN
Basic static load rating - C <sub>0</sub>	19 kN
Fatigue load limit - P <sub>u</sub>	0.8 kN
Limiting speed	5600 r/min
Calculation factor - k <sub>r</sub>	0.025
Calculation factor - f <sub>0</sub>	13.8
Category	Single Row Ball Bearings
Inventory	0.0
Manufacturer Name	SKF
Minimum Buy Quantity	N/A



## BEARING INDUSTRIA CUSCINETTI S.P.A.

Weight / Kilogram	0.38
Product Group	B00308
Enclosure	2 Seals
Precision Class	ABEC 1   ISO P0
Maximum Capacity / Filling Slot	No
Rolling Element	Ball Bearing
Snap Ring	No
Internal Special Features	No
Cage Material	Steel
Enclosure Type	Contact Seal
Internal Clearance	C0-Medium
Inch - Metric	Metric
Long Description	40MM Bore; 80MM Outside Diameter; 18MM Outer Race Diameter; 2 Seals; Ball Bearing; ABEC 1   ISO P0; No Filling Slot; No Snap Ring; No Internal Special Features
Category	Single Row Ball Bearing
UNSPSC	31171504
Harmonized Tariff Code	8482.10.50.68
Noun	Bearing
Keyword String	Ball
Manufacturer URL	<a href="http://www.skf.com">http://www.skf.com</a>
Manufacturer Item Number	6208-2RS1
Weight / LBS	0.84
Outer Race Width	0.709 Inch   18 Millimeter
Bore	1.575 Inch   40 Millimeter
Outside Diameter	3.15 Inch   80 Millimeter
d <sub>1</sub>	52.6 mm
D <sub>2</sub>	69.8 mm
r <sub>1,2</sub> min.	1.1 mm



## BEARING INDUSTRIA CUSCINETTI S.P.A.

$d_a$ min.	47 mm
$d_a$ max.	52.5 mm
$D_a$ max.	73 mm
$r_a$ max.	1 mm
Basic dynamic load rating C	32.5 kN
Basic static load rating $C_0$	19 kN
Fatigue load limit $P_u$	0.8 kN
Calculation factor $k_r$	0.025
Calculation factor $f_0$	13.8
Mass bearing	0.38 kg